



## Images from the Critique session held in August on Zoom



**“Shadows on the Wall”**  
**By Stan Collyer**

When I was on a photo workshop in Cuba six years ago, we went to a small town one evening for a special concert. While waiting for the festivities to begin, I wandered around the village square looking for something to shoot. I thought the shadows created by two street lamps looked interesting, so I sat on a bench in the darkness, waiting for someone to walk by. It was a pretty deserted street, so it took a while. Shot at f/2.8, 70mm, 1/80 sec, ISO 6400. I converted it to B&W and boosted the contrast.



**“Portrait of the Lizard”**  
**By Gosia Klosek**

This is a nice picture of a lizard basking on hot rocks. The shadow indicates the direction of the sun. Some branches should be cleaned/deleted or the area darkened to make it a more appealing image. Nikon ISO 200 f/8.0 1/320 sec

**“High Wheel Bike Race”**  
**By Dale Lewis**



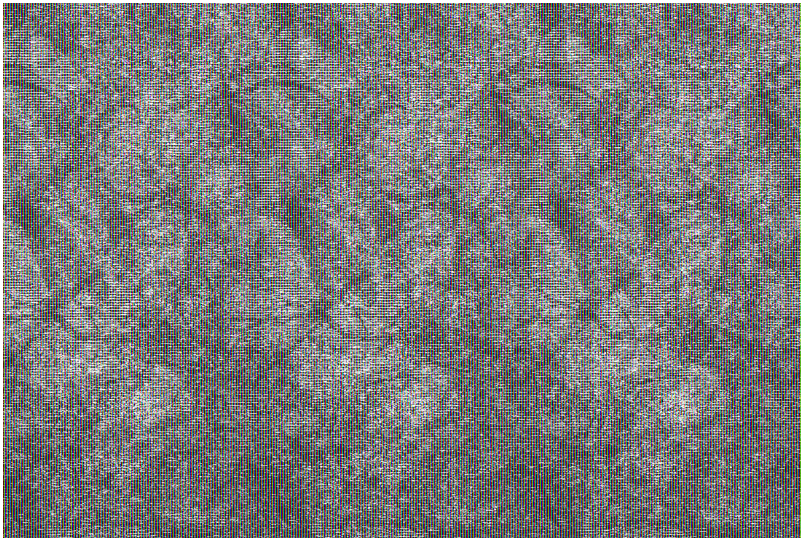
This photo was taken on July 12 at the High Wheel Bike Race 2022 in Frederick, MD. The camera settings are as follows: Canon 6D Mark II, 1/250 sec, f/5.6, ISO 250, 39 mm, (EF 24-70 mm, f/2.8L, II, USM). I was thinking of submitting this photo for MAPV, therefore, I submitted it to NIHCC for critique by Dick Sprott and the members of the NIHCC. I was told to remove the edge of the shoe to the right of the young lady in blue. I questioned whether I should remove the red tapes at the side. The members told me to leave them in because they reflect a boundary separating the crowd from the bikers. Initially, I thought there were 3 bikers, but I realized there were 4 bikers during the critique. Thank you for all the good comments.



## **“Hover Fly and Purple Heart Flower”**

**By David Terao**

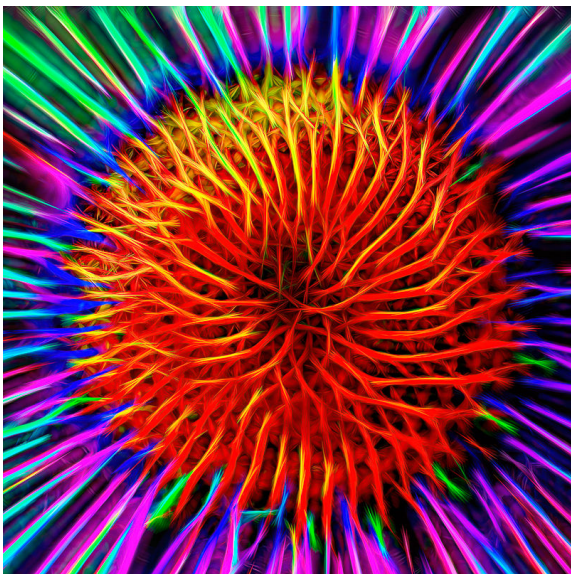
I don't specifically remember what the judge said about this image because everyone was allowed to provide critique. And, all critiques were useful and very welcome. For example, someone noted that the blurred dew drop in the background was distracting and should be cloned out. Also, the blurred purple leaf at the bottom center should be darkened a little. Great comments that I hadn't seen because I was too close to my own image, and I incorporated those comments into the final image.



## **“Wide Angle Tree”**

**By: Diane Poole**

I took this image at Brookside Gardens . I think it is a good capture, and will enter it in the photo contest based on the critique and how it was received.



## **“Exploding Echinacea”**

**By: Douglas Wolters**

This is how much fun you can have with a so-so shot of an echinacea and Topaz Studio! Dick pointed out that the shot was not centered, which I really should have seen, and someone else noted a blank place in the colorful spikes around the center, which I later filled in.